



OWNER'S MANUAL

Heater® Heavy Duty 12" Softball Pitching Machine

Applicable for Machine Only (HTR6000SBNBF)
or Machine With Ball Feeder (HTR6000SB)

www.HeaterSports.com

Model No's.
HTR6000SBNBF or
HTR6000SB

Serial No. _____

Write the serial number in the
space above for reference.

ACTIVATE YOUR WARRANTY

To register your product and
activate your warranty, call
1-800-492-9334

CUSTOMER CARE

For customer service inquiries,
please call our toll free line
at 1-800-492-9334.

CAUTION

**Read all precautions and in-
structions in this manual be-
fore using this product. Keep
this manual for
future reference.**

**Ball Feeder Shown For Model# HTR6000SB*



Instructions Date: 07/2022
Version: 00001

DO NOT RETURN TO STORE, CALL 1-800-492-9334

Read Before Operating!

IMPORTANT

**NEVER USE OR LEAVE THE MACHINE IN RAIN/MOISTURE.
DOING SO CAN RUIN THE MACHINE & VOID ITS WARRANTY.**

**THE HEATER PITCHING MACHINE THROWS REAL REGULATION BALLS;
HOWEVER, THE ACCURACY OF THE MACHINE DEPENDS ON THE QUALITY,
HARDNESS AND TYPE OF BALLS YOU USE IN THIS MACHINE!**

HEATER SPORTS RECOMMENDS USING HEATER PITCHING MACHINE BALLS IN THE MACHINE. THESE BALLS HAVE BEEN PRECISELY CRAFTED TO PROVIDE YOU WITH HOURS OF ACCURATE, TROUBLE FREE BATTING AND FIELDING PRACTICE. OTHER BRAND OF BALLS HAVE NOT BEEN TESTED IN THE MACHINE AND CANNOT BE VALIDATED AS SUFFICIENT AND SAFE.

Heater Pitching Machine Balls

Heater Pitching Machine Balls are recommended for use with your Softball Machine.

These balls are incredibly accurate, long lasting, and produce the fastest ball speed.

Regulation Leather Balls:

The Heater Pitching Machine works well with real leather balls; however, accuracy will vary more than with pitching machine balls because the seams on leather balls cause the machine to pinch the ball differently on each pitch. Be sure and use real leather balls with low seams, not simulated leather balls. Batters should be aware at all times.

KNOWN PROBLEMS WITH SIMULATED (SYNTHETIC) LEATHER COVERED BALLS . . .

Simulated (synthetic) leather balls:

Simulated leather balls are inexpensive seamed balls that don't work well in the Machine. During operation, portions of the simulated leather cover comes off the ball and attaches to the wheel of the machine. Also, during operation, consumers have reported seeing small puffs of smoke. These puffs are not smoke, but actual pieces of the simulated leather ball being turned into small dust particles as they pitch.

IF BALLS GET WET, THEY WILL NOT PITCH PROPERLY UNTIL THEY DRY.

KNOWN FACTS ABOUT DIFFERENT BALLS:

The speed and accuracy of each pitch is dependent on the hardness, roundness, and type of each ball used.

For example: If you have 12 balls and 4 are softer than the others (these balls will throw lower than the other balls), if 4 are harder than the others (these balls will throw higher than the other balls), and if 4 are not round (these balls will throw inside and outside). THIS COULD LEAVE THE USER WITH THE IMPRESSION THAT YOUR PITCHING MACHINE IS INACCURATE WHICH IS NOT CORRECT.

PARTS

**Replacement Parts Available by Calling Heater Sports*



Housing (A)

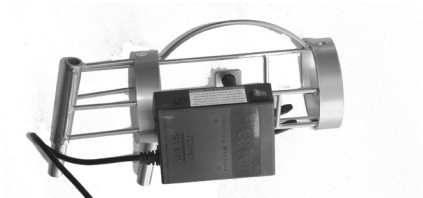


Leg Assembly (9 Total)

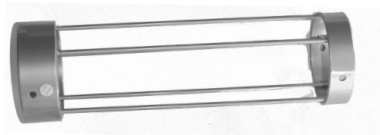
Bottom Leg (B): 3x

Middle Leg (C): 3x

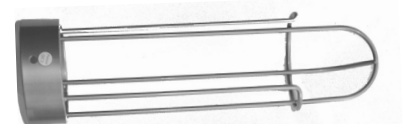
Top Leg (D): 3x



Ball feeder: Motor Section (E)



Ball feeder: Middle Section (F)



Ball feeder: End Section (G)



Ball feeder
Hardware
(H): 4x



Thumbscrew
(I): 3x



Allen Wrench
(J)

LEG ASSEMBLY

STEP 1: Slide leg sections together (See illustration). Lock the sections together by making sure the push pins line-up with each adjoining hole and lock into place.

Bottom Section B



Middle Section C



Top Section D



Follow Step 1 to assemble all three legs for the pitching machine.

After assembling Pivot Arm and Housing, slide the 3 leg sections into the Housing (A) and secure with the Thumbscrews (Part i).



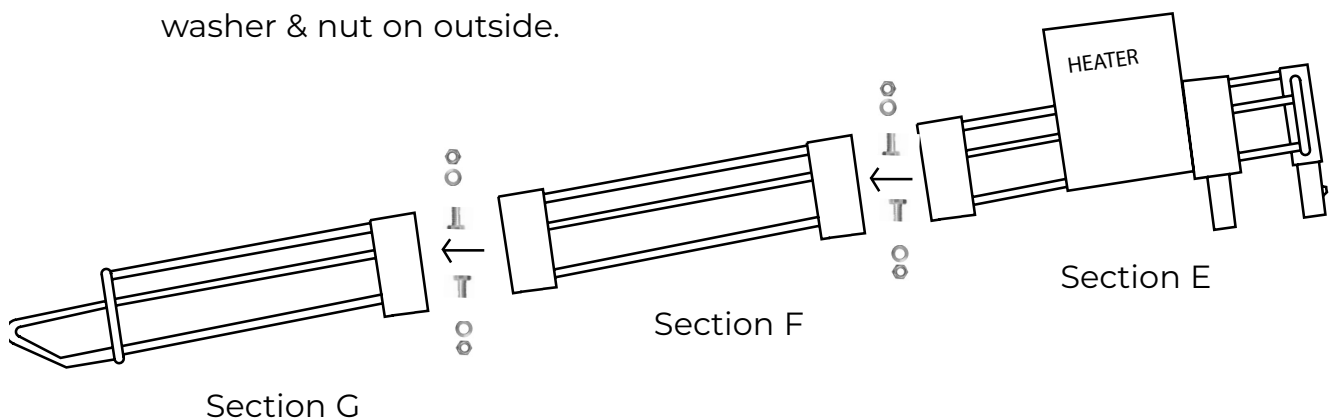
Thumbscrew
(I): 3x

BALL FEEDER ASSEMBLY

Applicable for Machine With Ball Feeder Included (Model# HTR6000SB)

STEP 1: Slide sections E - F - G together.

STEP 2: Secure sections by installing ball feeder hardware (J).
Insert bolt from inside feeder and secure with washer & nut on outside.



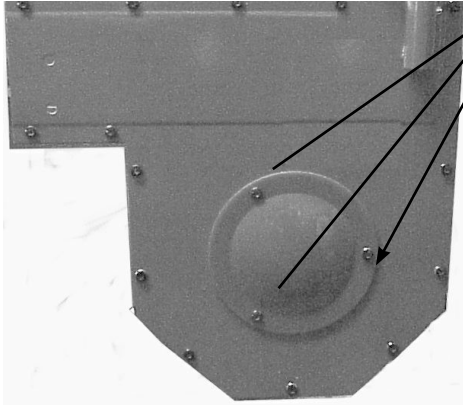
WARNING

- Turn off pitching machine and auto-ball feeder motor when loading balls.
- Make sure batter is ready before turning on auto-ball feeder and machine.
- Make sure all persons stand clear of pitching machine and ball path.
- Make sure all persons are aware pitching machine is throwing balls automatically.
- Make sure machine operator is ready to turn off auto-ball feeder power switch if necessary.

PRE-OPERATION

Ensure The Hub & Tire Black Lines Align & Check Air Pressure In Pitching Machine Tires.

WARNING: MAKE SURE MACHINE IS UNPLUGGED AND THE TIRES ARE NOT SPINNING DURING THESE OPERATIONS!



Pre-Operation #1

Locate Allen Wrench (provided in package) and unscrew (3) three wheel cover screws.

****Important:**

Periodically inspect the tire to make sure it is not worn out or punctured. Serious damage could result if operated in this condition.

Pre-Operation #2

You'll see both the Tire & Hub have a BLACK magic marker line drawn on them. These two lines should connect, as if they are one line. This ensures the machine's tires are in balance and will perform correctly. If the two lines are not touching, let all your air pressure out of the tire and rotate the tire on the hub until they do touch exactly.

Next, locate a tire pressure gauge (not provided) and check tire pressure. Tire pressure should be between 30-32 lbs. If tire pressure reads low, use an air pump to inflate the tires. If tire pressure reads high, decrease the air pressure by pushing down the air stem bubble located in the middle of the air stem.

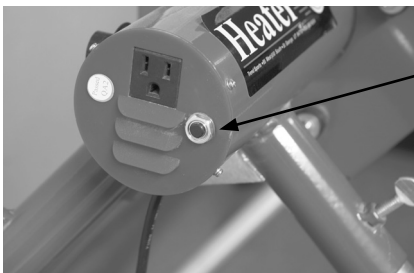
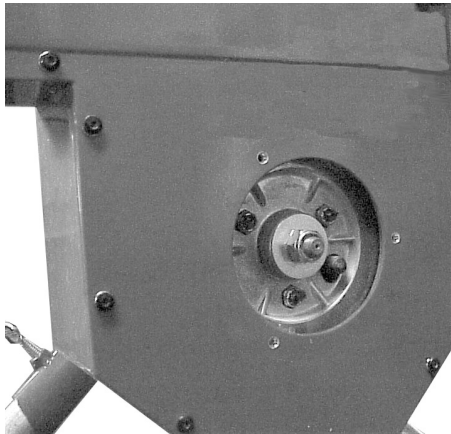
****Important:**

If tire is not balanced, it will vibrate and sound loud. Also if the tire is not filled at the exact same pressure, it may lead to inaccurate pitches and dramatic changes in pitch speed.

Pre-Operation #3

Locate Allen Wrench (provided in package) and secure Wheel Cover back on machine by tightening 3 Wheel Cover Screws.

Warning - Serious Bodily Injury: Never operate Pitching Machine until Wheel Covers are secured.



Fuse Re-Set Button

The Pitching Machine has a fuse reset button which is designed to protect the electronic circuit. If the machine will not turn on, check this button to make sure it is not popped out. If it is popped out, press it back in to reset the fuse circuit breaker. This should allow the machine to operate safely again.

OPERATION

CAUTION!

USE HEATER PITCHING MACHINE BALLS FOR THE MOST ACCURATE PITCH POSSIBLE. PITCHING MACHINES THAT USE A WHEEL TO THROW BALLS WILL NOT THROW REAL BALLS AS ACCURATE BECAUSE OF THE SEAMS ON THE BALL.

IMPORTANT: THIS PRODUCT IS TO BE USED BY ADULTS ONLY. MAKE SURE MACHINE IS TURNED OFF BEFORE ASSEMBLY! KEEP HANDS AND ALL BODY PARTS AWAY FROM BALL EXIT! SERIOUS HAND AND BODILY INJURY MAY RESULT IF USED INCORRECTLY!

- Step 1: Insert auto-ball feeder tubes into auto-ball feeder bracket (2X) and plug into outlet.
- Step 2: Place balls into ball feeder. (Make sure the pitching machine is not plugged in.)
- Step 3: Ensure pitching machine variable speed control knob shows "0".
- Step 4: Plug pitching machine into 3 prong power outlet (Make sure pitching machine wheel is not spinning.)
- Step 5: Aim pitching machine at desired target and make sure every person and everything is clear of pitching machine ball path.
- Step 6: Turn variable speed control knob on to desired speed setting and turn on automatic ball feeder.
- Step 7: Make sure ball is pitching in desired zone before allowing a batter to step up to hit.
- Step 8: Adjust pitch height by loosening the Pitch Height Adjustment Knob and rotating the Baseball Housing to desired location. Re-tighten when done.
- Step 9: Once balls are done pitching, turn both machine & ball feeder off before collecting balls to ensure no bodily injury occurs.

WARNING!



- Do not put hands or fingers in pitching machine.
- Make sure all persons are clear of the softball path and away from pitching machine before pitching any softball.
- Make sure you pitch only one softball at a time.
- Make sure all softballs are out of machine before turning the pitching machine on.
- Do not stand in front of pitching machine.
- Do not operate in moisture.
- This machine may cause serious bodily injury.
- For adult operation only.
- Batter must wear NOCSAE Approved Batting Helmet.
- Pitching Machine Operator must stand behind protective safety screen.

WARNING!

- Only use dimpled pitching machine softballs to pitch to batters. Pitching machines that use a wheel to throw softballs will throw real softballs inaccurately because of the seams on the softball and may hit a batter and cause physical injury.
- Always have back legs staked into the ground before pitching to a batter or the Heater Pitching Machine may move and hit the batter and cause serious physical injury.
- Make sure you pitch only one softball at a time.
- Batter must wear NOCSAE Approved Batting Helmet.
- Pitching Machine Operator must stand behind protective safety screen.

Heater **Heavy Duty** **12" SOFTBALL MACHINE**

**Estimated Pitch
Speeds At 40'**

	Lite Ball MPH	Real Ball MPH
Dial #		
2	14	11
4	28	22
6	42	33
8	56	44
10	70	55

Thank you for purchasing the Heater Softball Pitching Machine. If you have any questions or comments on how Heater Sports can improve the Deuce Pitching Machine, please call our 24 hour customer service hot line at (800) 492-9334.